

ELE101

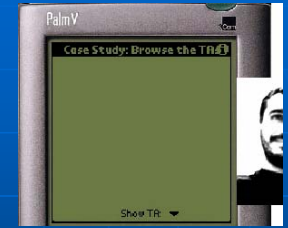
Precept 9

James Donald
April 22-23, 2004

Palm Databases & Debugging Strategies

Review & outline

- Last time:
 - Palm **.rcp** resource scripts

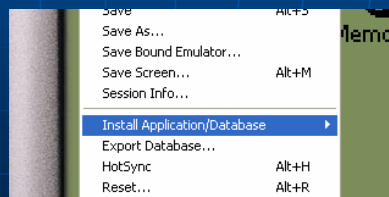


- Today:
 - Palm **.pdb** databases
 - Debugging strategies

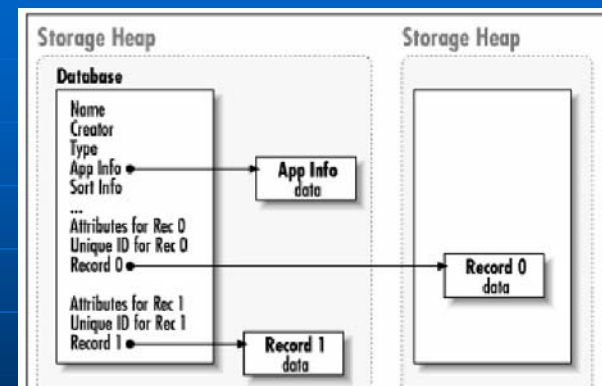


Setup instructions

- Nothing out of the ordinary.
- Download the precept 9 files, unzip **precept9.zip**, open up **ele101login.bat**, run the emulator (using **emulator &**) and install **record.prc**.



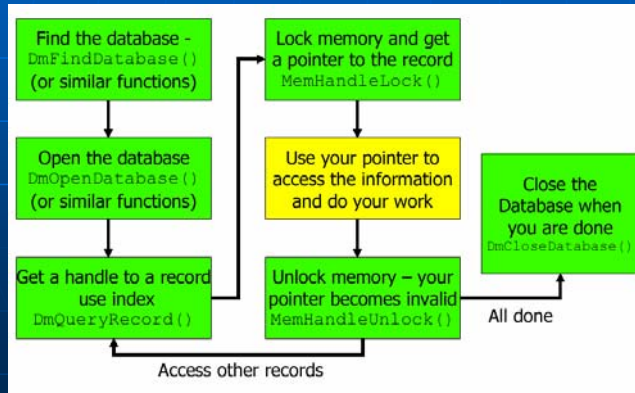
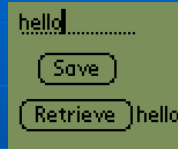
Palm databases review



- Records are held in FLASH memory and are directly accessible through memory operations.

Palm database example

- Our test program: **record**



What's new in this program?
Persistent storage

Administrivia

- Think about and read up on your final project.
- Office hours after precept today.



Intel XScale Chips Grow Up

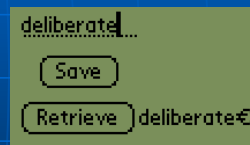
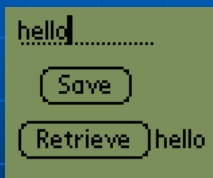
April 12th, 2004

"The company announced a new family of processors in the XScale line, saying the devices can handle various forms of wireless broadband with enough muscle for applications such as *DVD quality full-motion video conferencing*"

"[The Intel PXA27x XScale family] includes *Wireless MMX* technology, which aims to increase 3D game performance while conserving power."

Debugging

- What were some of the problems with our **record** program?



- When thinking up good test cases, consider that the extreme cases (a.k.a. corner cases) are the most likely to go wrong.

Debugging – passive methods

- Sitting and staring at the code.
- Rearranging your program aimlessly until the bug disappears.
- Installing your program on the bug-tolerant Palm instead of the emulator.
- Emailing your source code to the TA.



Debugging with a debugger

- Click the home icon button in the emulator to return to the applications list.
- In the ele101login prompt, type:
`m68k-palms-gdb record`
- Then in the debugger, put:
`target pilot localhost:2000`
- Click the **record** icon to enter our program.
- Back in the ele101login window, type:
`continue`
- Now let's make our program crash and this time the 'Debug' button will actually do something.
- One example of a useful debugger command:
`bt`

Debugging with assertions

- *Assertions* are covered in Chapter 24, page 539. Assertions "allow a program to monitor its own behavior and detect possible problems at an early stage."

```
dayofmonth = GetBirthdateDay();  
assert(dayofmonth >= 1 &&  
        dayofmonth <= 31);  
/* Then go on to safely use the  
   dayofmonth variable in our program. */
```
- The equivalent of `assert()` for Palm OS programming is `ErrFatalDisplayIf()`:

```
ErrFatalDisplayIf(dayofmonth < 1 ||  
                  dayofmonth > 31, "Invalid day");
```

Directly outputting debug information

- Usage of extra `printf()` statements was helpful for examining your program's execution in assignments 1-4.
- In assignments 5 and 6, the same goes except we had to use `StrPrintF()` + `WinDrawChars()`.
- `ErrDisplay()` may be just as handy in your upcoming project. Example:

```
ErrDisplay("Calling danger function.");  
danger_function();
```

Palm OS Emulator

Record (0.0.1) called SysFatalAlert with the message: "record.c, Line:80, Calling danger function."

In Conclusion



- Palm databases
 - An interface geared towards mobile applications: uses memory handles instead of file streams.
 - Remember to lock/unlock the memory chunks!
- Debugging
 - You can use a debugger.
 - Can use assertions.
 - Can even use plain display messages.
 - But whatever you do, do something!
- Good luck on the final project!