



UC San Diego Skaggs School of Pharmacy and Pharmaceutical Sciences (SSPPS)

Julie Trinh & Vi Nguyen
P3 Pharmacy Students

UC San Diego
SKAGGS SCHOOL OF PHARMACY
AND PHARMACEUTICAL SCIENCES

Introducing: Julie Trinh & Vi Nguyen



Agenda

Review our curriculum

Review our faculty, student and alumni
school accomplishments

Application & interview process

Scholarship and grant Opportunities

Student Life



k16420993 fotosearch.com ©



Pharmacists are
health care providers!



65-70 students per
year
54 faculty
members



Innovative and
successful
curriculum
including P2 year



Unique
Pass/No Pass
grading
system



High board
passing rate AND
residency match
rate



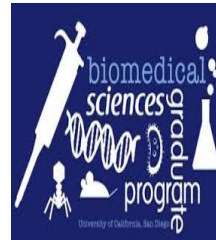
↓ Tuition than private
schools
↓ Cost of living than
competing public
schools



Patient care
interactions
starting year 1



Numerous/diverse
clinical training
sites including
Free Medical
Clinics



National research leader
-PharmD/PhD with
Biomedical Sciences
-Post-sophomore
fellowship
with Janssen



Novel
entrepreneurship
training and
mini-MBA (FREE)



Masters Degree Programs:
-Public Health
-Drug Development &
Production

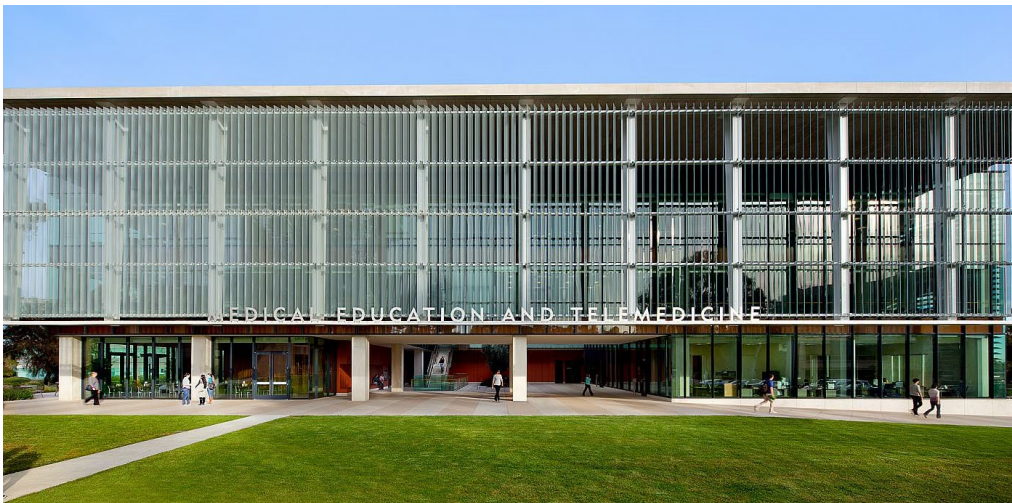
Mgmt.



Highlights of our School

UC San Diego
SKAGGS SCHOOL OF PHARMACY
AND PHARMACEUTICAL SCIENCES

Health Sciences Campus





Dominic Cooper: Diversity Champion

We embrace, promote & support diversity!!!

<https://pharmacy.ucsd.edu/diversity>

<http://ccc.ucsd.edu/>

<https://diversity.ucsd.edu/>

UC San Diego
SKAGGS SCHOOL OF PHARMACY
AND PHARMACEUTICAL SCIENCES

Introductory Pharmacy Practice Experiences

- Goal is to achieve practice competencies in a number of different practice locations; responsibility increases with student experience
- Throughout years 1-3, students are assigned to Introductory Pharmacy Practice Experiences (IPPEs)
- Students participate in the UC San Diego Student-run Free Medical Clinics



Objective Structured Clinical Examination (OSCEs)



OSCE,
Student
Team
Bonding
Video

Year 2 of the Curriculum (Embracing Collegiality)

- Focuses on the basic biomedical sciences that all health professional students require
- Many courses are taught by School of Medicine faculty and taken along with School of Medicine students
- **ONLY** school in the nation to successfully offer this joint curriculum



Advanced Pharmacy Practice Experience (APPE) – A few examples

- Intensive care unit (ICU)
- Transitions of care
- Infusion care
- Antiretroviral clinic
- Kidney/liver transplant
- Pediatrics
- Geriatrics
- Surgical ICU, Trauma
- Neonatal ICU
- Veterinarian medicine
- Managed care
- Bone marrow transplant
- Cardiology, Heart failure
- Compounding Pharmacy
- Emergency Medicine
- Heart-Lung Transplant
- Home Infusion
- Infectious Disease
- Oncology
- Pain/palliative care
- Psychiatry
- Pharmaceutical Industry

Direct-patient care APPE in California per intern license regulations

Non-direct patient care APPE outside California (e.g. FDA)

International APPE rotation also available

Research

- You do NOT need any research experience to apply to our school and matriculate.
- We will teach you research while you are student here.
- You will be given a list of research topics (broad range of topics from basic to clinical)
- You will have between your P1-P4 year to complete your research project, present a poster at a national meeting, and publish a manuscript with your research advisor (and co-investigators)

Grading System Promotes Collaboration

- Honors
- Pass
- Fail
- Used to reduce competition, promote teamwork, learn to know.....



2019 Board Exam Results

UC School	NAPLEX Pass Rate	CPJE Pass Rate
UC San Diego	100%	86%
UC San Francisco	98%	76%



UC San Diego SSPPS

**RANKED #1 OF
143 SCHOOLS**

For NAPLEX pass rates for three years in a row (2017-2019).

72%
residency
match rate
for the last
5 years

APPLICATION PROCESS

Admissions Requirements

- Completion of bachelor's degree prior to matriculation.
- A minimum overall grade point average (GPA) of 3.0 is required to apply.



Admissions Requirements



- PharmCAS online application (pharmCAS.org)
 - Pharmacy.ucsd.edu
 - <http://www.pharmcas.org/preparing-to-apply/>
 - [Fee waivers are available for application](#)
 - Applications are available in ~mid July of every year
- SSPPS [Processing Fee](#) (fee waivers also available)
- To learn more about the PharmCAS Application please click [here](#):

Information on our website: pharmacy.ucsd.edu

Quick Links



[Admissions - Apply Now](#) →

[2020-2021 Virtual Admissions Interviews](#) →

[Academic Recruitments](#) →

[Virtual Tour](#) →

[Alumni Portal](#) →

[Student Body and Organizations](#) →

[Contact Us](#) →

[Application Checklist](#)

[Application Tips](#)





2020-2021 APPLICATION CYCLE OPENS
WEDNESDAY, JULY 15, 2020

WWW.PHARMCAS.ORG

EARLY SUBMISSION DEADLINE
MONDAY, AUGUST 31, 2020

REGULAR DEADLINE
TUESDAY, DECEMBER 1, 2020

UC San Diego

Skaggs School of Pharmacy
and Pharmaceutical Sciences

Email:
sppsadmissions@ucsd.edu

LiveChat
<https://pharmacy.ucsd.edu>

PHARMACY
& PHARMACEUTICAL SCIENCES

We DO NOT Require

- PCAT
- Additional application other than PharmCAS (supplemental application)
- Additional questions within PharmCAS
- No specific undergraduate major (as long as you complete our pre-requisites)

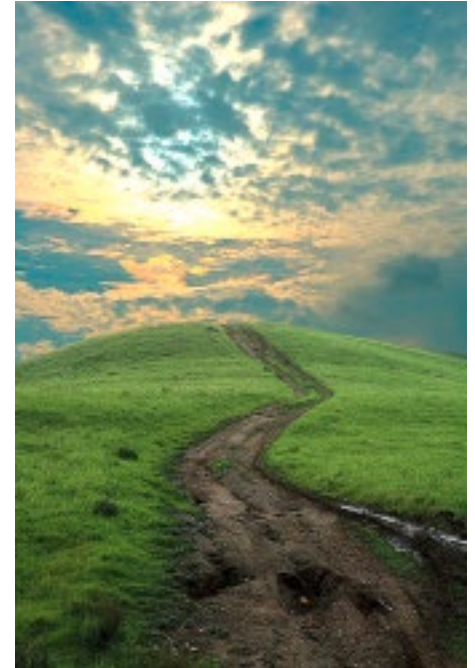
What do we look for in an ideal applicant?

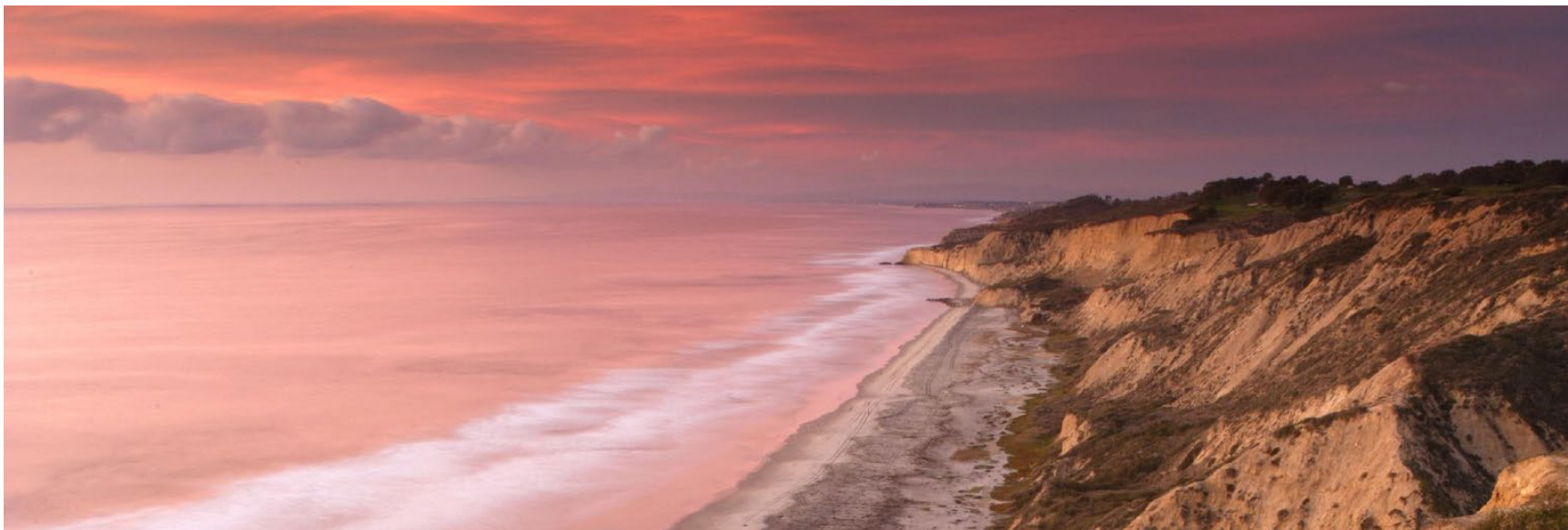
- We have a holistic review
- Enthusiasm for the profession
 - Explore the profession of pharmacy
 - If you have time explore different pathways
- Work/life balance
- Campus organizations (e.g. prepharmacy society/club)
- Leadership positions
- Successful in undergraduate courses especially science courses

What do we look for in an ideal applicant

Your Pathway to Exploring the Profession

- What is pharmacy or health related field?
 - Working or volunteering in a pharmacy
 - Shadowing pharmacists in various settings
- What other experiences are we looking for?
 - Work or community service in various healthcare settings
 - Pre-pharmacy and other student organizations
 - Research
 - Leadership positions
 - Other extracurricular activities
- List all your activities (pharmacy and non-pharmacy) on your application including employment





COVID-19 Impact on Preparing for Pharmacy School

- Course Grades (letter grades for pre-requisite courses)
- Labs
- Pharmacy Experience

Key Aspects of The Interview Day

- Will be virtual for the 2020-2021 cycle
- Overview of UC San Diego Skaggs School of Pharmacy and Pharmaceutical Sciences (SSPPS) Presentation
- Timed-Essay
- 2 on 1 Interview
- Meet Current SSPPS Students
- Financial Aid Information Session

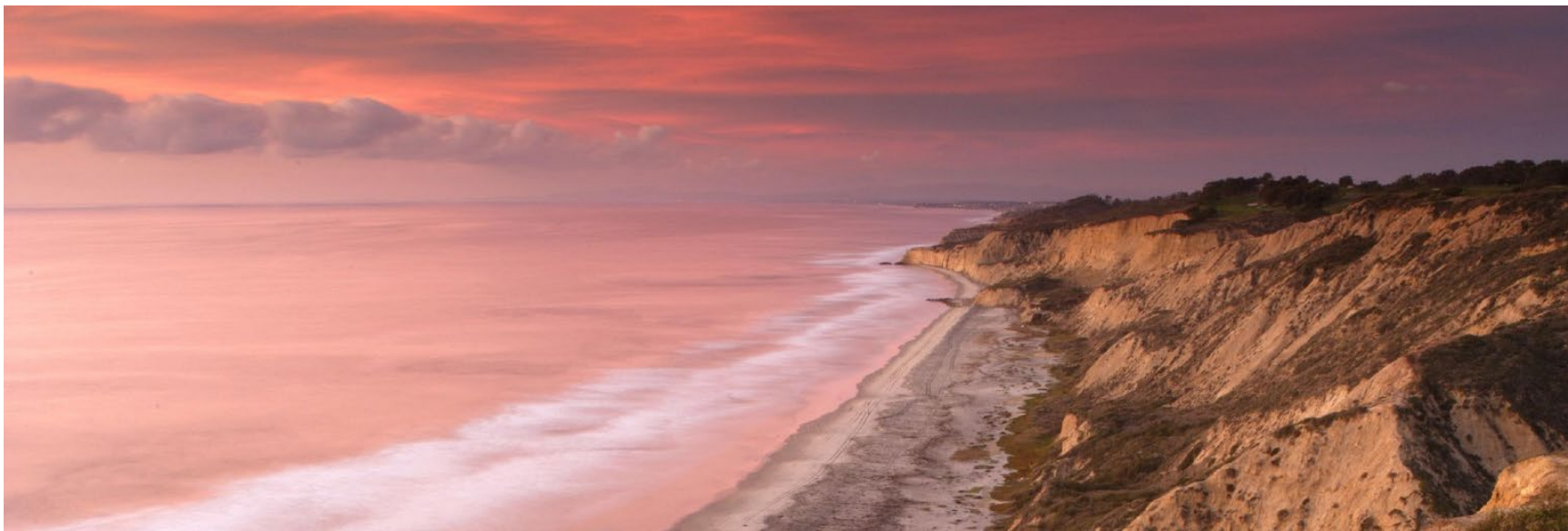


How to Prepare for an Interview

- Review your PharmCAS Application before the interview.
 - Highlight key aspects of your PharmCAS application and relevant experiences.
 - Highlight new experiences since submitting the PharmCAS application.
- Familiarize yourself with our school, program, & faculty.

How to Prepare for an Interview

- Practice interviewing with colleagues and mentors.
 - There are many interview questions online.
- Be able to describe the field of pharmacy and relay your enthusiasm for why pharmacy is right for you.
- Come prepared to ask questions during your interview.



Cost of Studies

Cost of Study/Financial Aid

Fall Quarter 2020 (3 quarters per year)

- Resident Fees **\$15,257.66 per quarter**
- Non-Resident Tuition/Fees **\$19,339.66 per quarter**
- ALL students are encouraged to apply for eligible federal and state financial aid
 - <http://pharmacy.ucsd.edu/prospective/finaid.shtml>



Scholarships & Grants

- Our school offers recruitment scholarships
- Once a student matriculates there will be opportunities for them to apply for scholarships and grants
- **\$1,000 - \$25,000 per student based on merit & need**



Scholarships & Grants



- Summer research grants
- Grants to support students to attend professional meetings to present their research
- APPE international scholarships
- Internship opportunities at UC San Diego Health and community pharmacy sites





Balancing School, Professional Activities, Work and LIFE

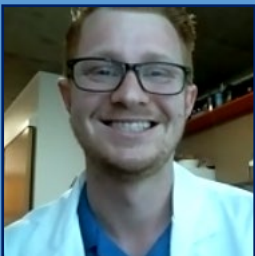
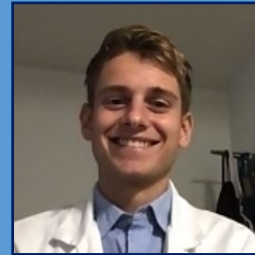
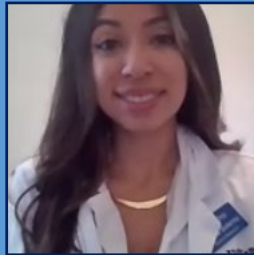
Well-rounded Experience

Wellness Events!

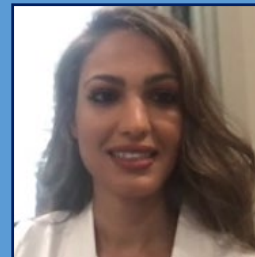
UC San Diego
SKAGGS SCHOOL OF PHARMACY
AND PHARMACEUTICAL SCIENCES

Mental and Public Health

Mental Health	Wellness Events	Quarterly
	Class Socials	Quarterly
	College of Psychiatric and Neurologic Pharmacists CPNP (Student Org) Events	Quarterly
	Advisor for Student Wellness – Dr. Shapiro	Available 24/7
	CAPS Counselor – Dr. Chang	Weekly Meetings
Public Health	<ul style="list-style-type: none"> • Annual Student Led Vaccination Clinics • Student Led Health Fairs 	



UC San Diego
 Skaggs School of Pharmacy
 and Pharmaceutical Sciences
 2020-2021
 Student
 Ambassadors



Surfing With Your Professor

Off Campus Student Life

P1 Hand Sanitizer Challenge

Hallway Conversation with Skaggs Students

Virtual Tours

- [Skaggs School of Pharmacy and Pharmaceutical Sciences Virtual Tour](#)
- [Undergraduate Campus Virtual Tour](#)

Why Skaggs Part I

Why Skaggs Part II

Why our P1s chose Skaggs School of Pharmacy and Pharmaceutical Sciences over other schools

1. Small class size, community feel
2. School reputation, ranking
3. Curriculum & pass/no pass grading
4. Location in southern California
5. Financial aid/overall cost
6. High board passing rate
7. High residency match rate
8. Lots of research opportunities

We hope you
join our Skaggs
family soon!



<https://pharmacy.ucsd.edu>
sppsadmissions@health.ucsd.edu

 Facebook

 Instagram

 Twitter

 YouTube

UC San Diego
SKAGGS SCHOOL OF PHARMACY
AND PHARMACEUTICAL SCIENCES

Supplemental Slides

Examples of Diverse Campus Wide Organizations

- African Student Association
- Asameshikai
- Association of Indian Graduate Students
- Black Graduate Student Association (BGSA)
- Chicanx-Latinx
- Chinese Students and Scholars Association (CSSA)
- WYSIWYG
- Chinese Union (CU)
- Cultural Iranian Student Association (CISTA)
- Graduate Student Association
- Hellenic Student Association
- Hong Kong Student Union (HKSU)
- Indian Student Association (ISA)
- Japanese Student Association
- Korean Graduate Student Association
- Korean Student Cultural Association (KO.SCA)
- Lesbian Gay Bisexual Transgender (LGBT) Organization
- Muslim Student Association
- Pacific and International Affairs Student Organization (PIASO)
- Pakistani Student Association
- Raza Graduate Student Association (RGSA)
- San Diego Indonesian Students (UCSD SADIS)
- SangamSD
- Singapore Students Association
- Taiwanese Graduate Student Association
- United Taiwanese Association (UTA)



Campus Housing



On-Campus Housing 101

<https://hdhgradfamilyhousing.ucsd.edu/>

- gradfamilyhousing@ucsd.edu
(858) 534-4723

UC San Diego
SKAGGS SCHOOL OF PHARMACY
AND PHARMACEUTICAL SCIENCES

UC San Diego Housing

- **All Students** are **guaranteed** at least **2 years** of on-campus housing
- Guaranteed Housing DOES NOT mean free housing
- Students are recommended to apply for housing as soon as you accept our offer
- Any questions regarding housing should be directed to the UCSD campus housing office

***Please note: the most up to date information can be found on the UCSD housing website**

Housing & Transportation

- **Lots of transportation options!**
 - Expansion of parking lots
 - Bridges and bike pathways
 - FREE bus/trolley passes and campus shuttle services
 - For more info:
<https://transportation.ucsd.edu/alternatives/index.html>





Highly Accomplished Alumni

UC San Diego
SKAGGS SCHOOL OF PHARMACY
AND PHARMACEUTICAL SCIENCES



We are so proud of our graduates!



Alumni Reunion!



Meet the Willefords



Residency/Fellowship Locations - Examples

- UC San Diego Residency & Fellowship
- University of Texas
- Kaiser San Diego
- Kaiser West Los Angeles
- San Diego Rady Children's
- Sharp Healthcare
- Stanford University
- VA Long Beach, Baltimore, Dallas, Las Vegas, LA, Manhattan, Palo Alto
- UC San Francisco
- UC Irvine
- University of Washington
- Prescription Solutions, Los Angeles
- Cedar Sinai, Los Angeles
- Tarzana Medical Center
- Texas Medical Center, Houston, TX
- UC Davis
- University of Illinois Chicago
- California Pacific Medical Center
- Kaiser Kern County
- Scripps Memorial
- Tripler Army Medical Center, Honolulu
- Loma Linda
- St. Luke's Regional – Boise
- University of Utah
- University of North Carolina
- Legacy Health System – Portland, OR
- USC Residency & Fellowship
- Rutgers/ Hoffman La Roche Fellowship
- Rutgers / Schering Plough Fellowship
- Forest Research Institute Fellowship, New York
- Fountain Valley Medical Center
- Huntington Memorial Hospital
- Naval Medical Center San Diego
- Naval Medical Center Camp Pendleton
- Providence Health Portland, OR
- Providence Sacred Heart Spokane, WA
- San Joaquin General hospital
- Scripps Mercy
- Palomar Medical Center
- Beth Israel Deaconess Medical Center, Boston, MA
- City of Hope Medical Center
- Children's Hospital Orange County

A Commitment to Pharmacy = Life-Long Learning

Fellowships

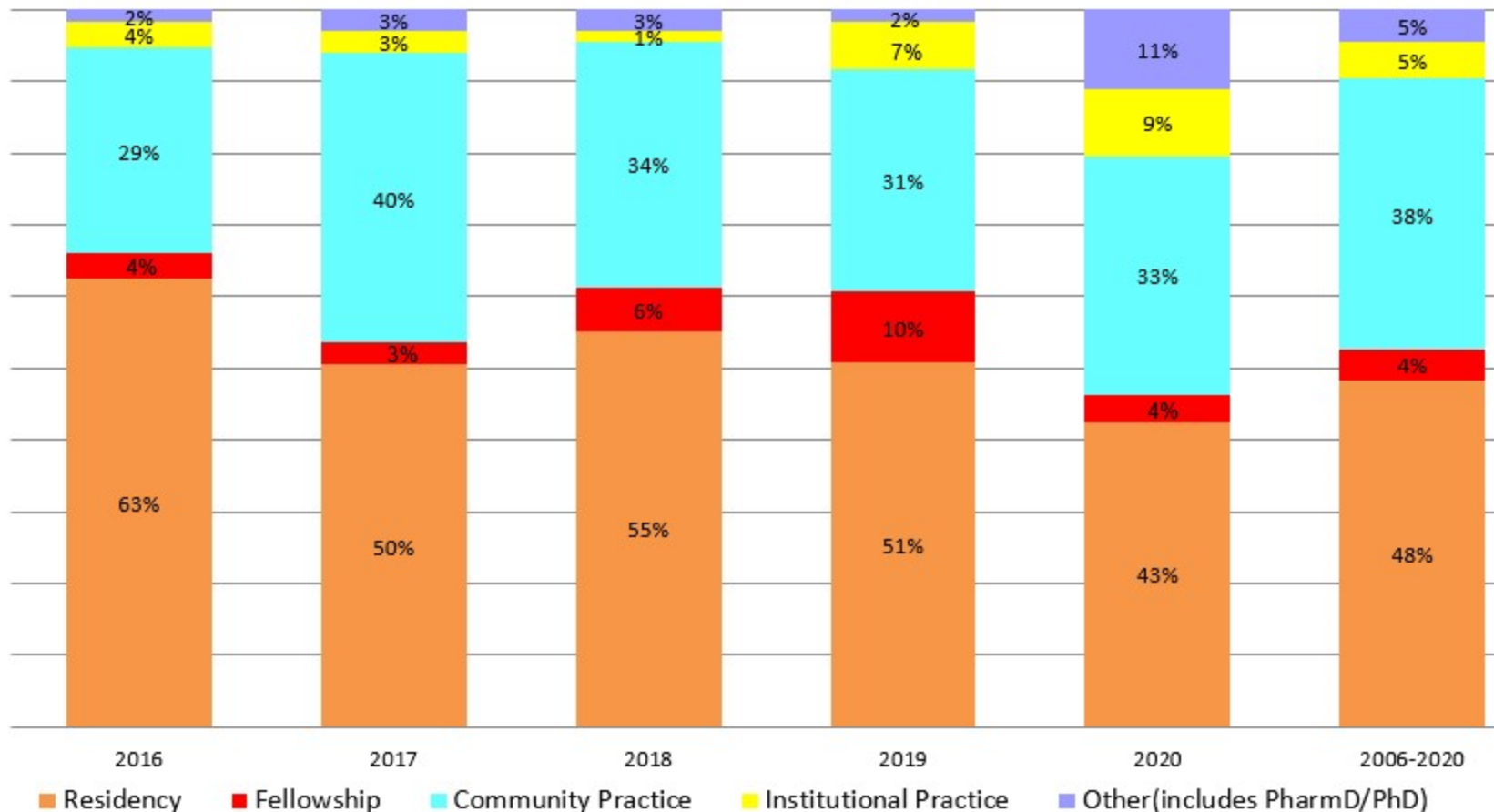
- Research Fellowship in Clinical Pharmacology-Oncology
- UCSD & Millennium Health Post-doctoral Research Fellowship in Health Economics of Personalized Medicine

Residency (PGY1/PGY2)

- Acute care
- Ambulatory Care
- Community
- Critical Care
 - NICU, BICU, SICU, Trauma
- Health System Pharmacy Administration
- Infectious Diseases
- Oncology
- Psychiatry
- Solid Organ Transplantation
- Internal Medicine

Where SSPPS Graduates Go

UC San Diego SSPPS - Last 5 Years, Post Graduate Activity
Percentage of Activity by Year



Types of Pharmacists

- Ambulatory care
- Acute care
- Managed care
- Home Infusion/IV
- Biotech or
Pharmaceutical
Industry
- Academia/research
- FDA
- NIH
- Board of Pharmacy
- Center of Disease Control
- World Health Org.
- Pharmacy Informatics
- Medical Science Liaison
- Retail



More on Finances

Cost of Study/Financial Aid

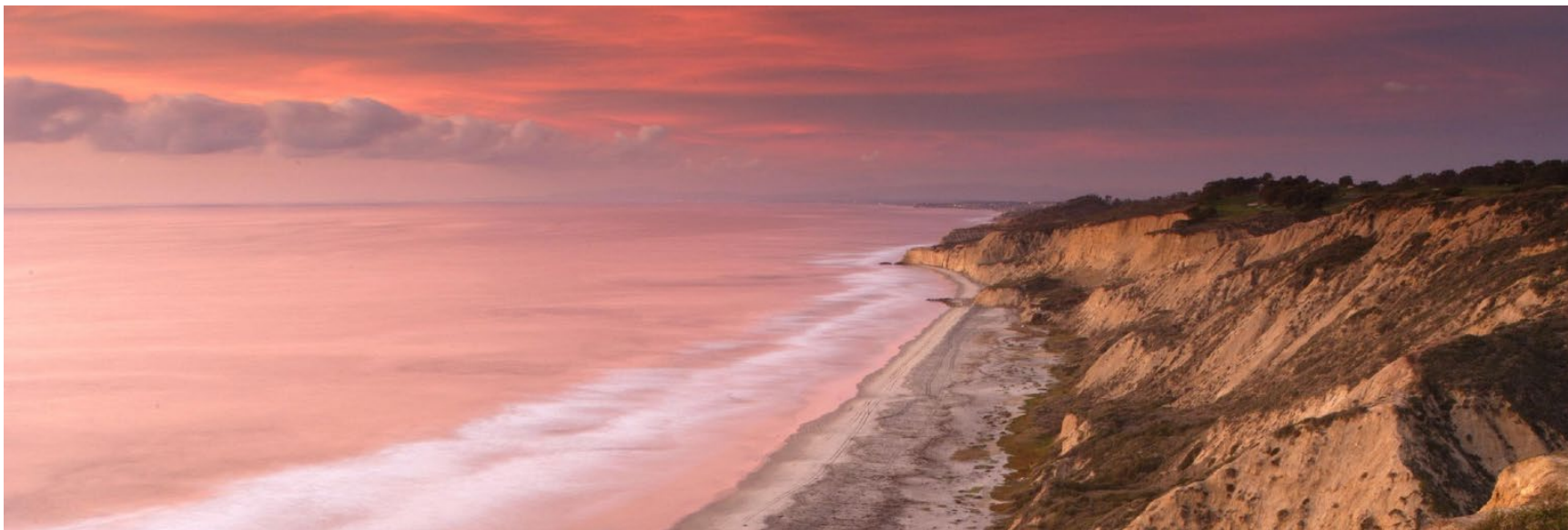
Fall Quarter 2020 (3 quarters per year)

- Resident Fees **\$15,257.66 per quarter**
- Non-Resident Tuition/Fees **\$19,339.66 per quarter**
- ALL students are encouraged to apply for eligible federal and state financial aid
 - <http://pharmacy.ucsd.edu/prospective/finaid.shtml>



Money Matters

- Lower tuition compared to private schools
- No deposit to hold an offer
 - Some schools charge up to \$2,000 non-refundable deposits
- Ask schools if they are following the Cooperative Admissions Guidelines (link provided below)
 - They are NOT following it if they are charging more than \$200 deposit before March 1st
- We always advocate for reduced financial burden on our students



Year 1 to Year 4 Curriculum

Year 1 of the Curriculum

Fall Qtr	Winter Qtr	Spring Qtr
Scientific Discovery Project		
Introductory Pharmacy Practice Experiences (IPPE)		
Leadership & Professional Development		
Pharmacy Practice I	Pharmacy Practice II	Pharmacy Practice III
Biostatistics Law & Ethics Pharmaceutics Pharmaceutical Chemistry I (Organic Chemistry)	Healthy Policy Clinical Research Design Pharmaceutics Pharmaceutical Chemistry II (Physical Chemistry)	Gross Anatomy Pharmacy Informatics Drug Information Pharmaceutics Pharmaceutical Chemistry III (Pharmacological Biochemistry)
Electives	Electives	Electives

Year 2 of the Curriculum

Fall Qtr (15 weeks)	Winter Qtr (10 weeks)	Spring Qtr (12 weeks)
Scientific Discovery Project		
Introductory Pharmacy Practice Experiences (IPPE)		
Leadership & Professional Development		
Foundations of Medicine (5 weeks) Cardiovascular (4 weeks) Pulmonary (3 weeks) Gastrointestinal System (3 weeks) Team-Based Learning	Renal (3 weeks) Team-Based Learning	Endocrine, Reproduction & Metabolism (4 weeks) Immunology & Hematology (5 weeks) Microbiology (3 weeks) Team-Based Learning
Pharmacology & Physiology (15 weeks)	Laboratory Medicine (10 weeks) Pharmacology & Physiology (10 weeks)	Pharmacology & Physiology (12 weeks)
Electives	Electives	Electives

Year 3 of the Curriculum

Fall Qtr	Winter Qtr	Spring Qtr
Scientific Discovery Project		
Introductory Pharmacy Practice Experiences (IPPE)		
Leadership & Professional Development		
Therapeutics I Human Disease Contemporary Topics in Pharmacology Advanced Professional Practice	Therapeutics II Therapeutics: Infectious Diseases Contemporary Topics in Pharmacology	Therapeutics III Contemporary Topics in Pharmacology
Pharmacogenomics	Electives	Pharmacoeconomics
Electives		Electives

Year 4 of the Curriculum

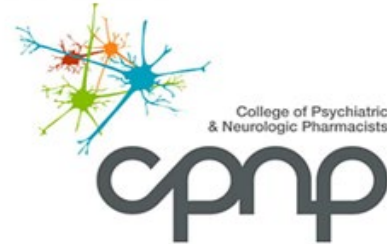
- APPE = Advanced Pharmacy Practice Experience
- Five Required: Acute Care, Ambulatory Care, Hospital, Community, Acute or Ambulatory Care II
- Two Electives

Summer Qtr	Fall Qtr	Winter Qtr	Spring Qtr
APPE 1 & 2	APPE 3 & 4	APPE 5 & 6	APPE 7



Student Led Campus Organizations & Other Opportunities

Examples of Student Organizations



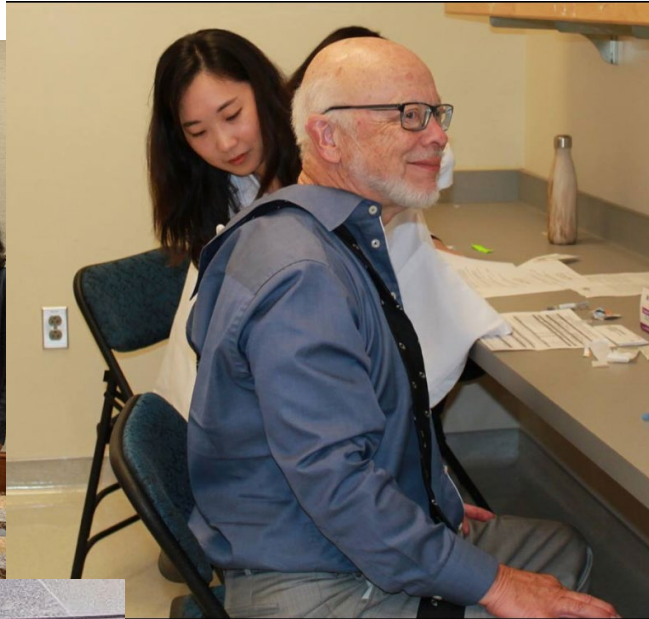
Many Opportunities Begin in the 1st Year

- SSPPS student government, faculty committees
- Professional Associations (just a sampling below)
 - American Pharmaceutical Association (APhA) – Academy of Students of Pharmacy
 - California and San Diego Pharmacists Association (CPhA, SDPhA)
 - American Society of Health System Pharmacists (ASHP) – Student Members
 - California and San Diego Societies of Health System Pharmacists – Student Members (CSHP, SDSHP)
 - Kappa Psi Professional Pharmacy Fraternity
 - American Association of Pharmaceutical Scientists (AAPS) – Student Chapter
 - American Society of Consultant Pharmacists (ASCP) – Student Chapter
 - College of Psychiatric and Neurologic Pharmacists (CPNP) – Student Chapter

Fun Activities...



Professional Activities...



International Opportunities



Phi Lambda Sigma Pharmacy Leadership Society



California Pharmacy Student Leadership Conference (CAPSLEAD)





The Recreation, Intramural, and Athletic Complex (**RIMAC**) is a sports complex at the University of California San Diego comprising an arena, a weight room and various other event and athletic facilities
FREE Membership for All students!

